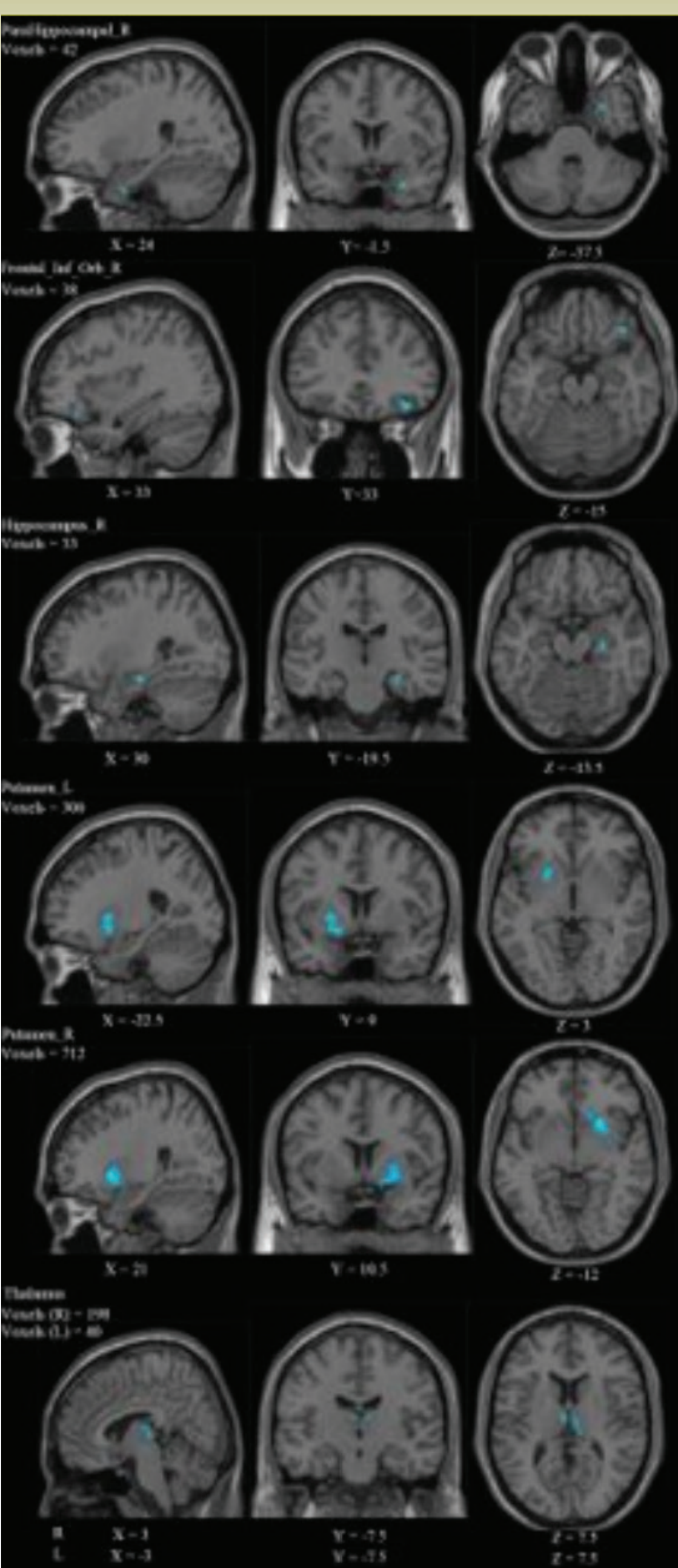
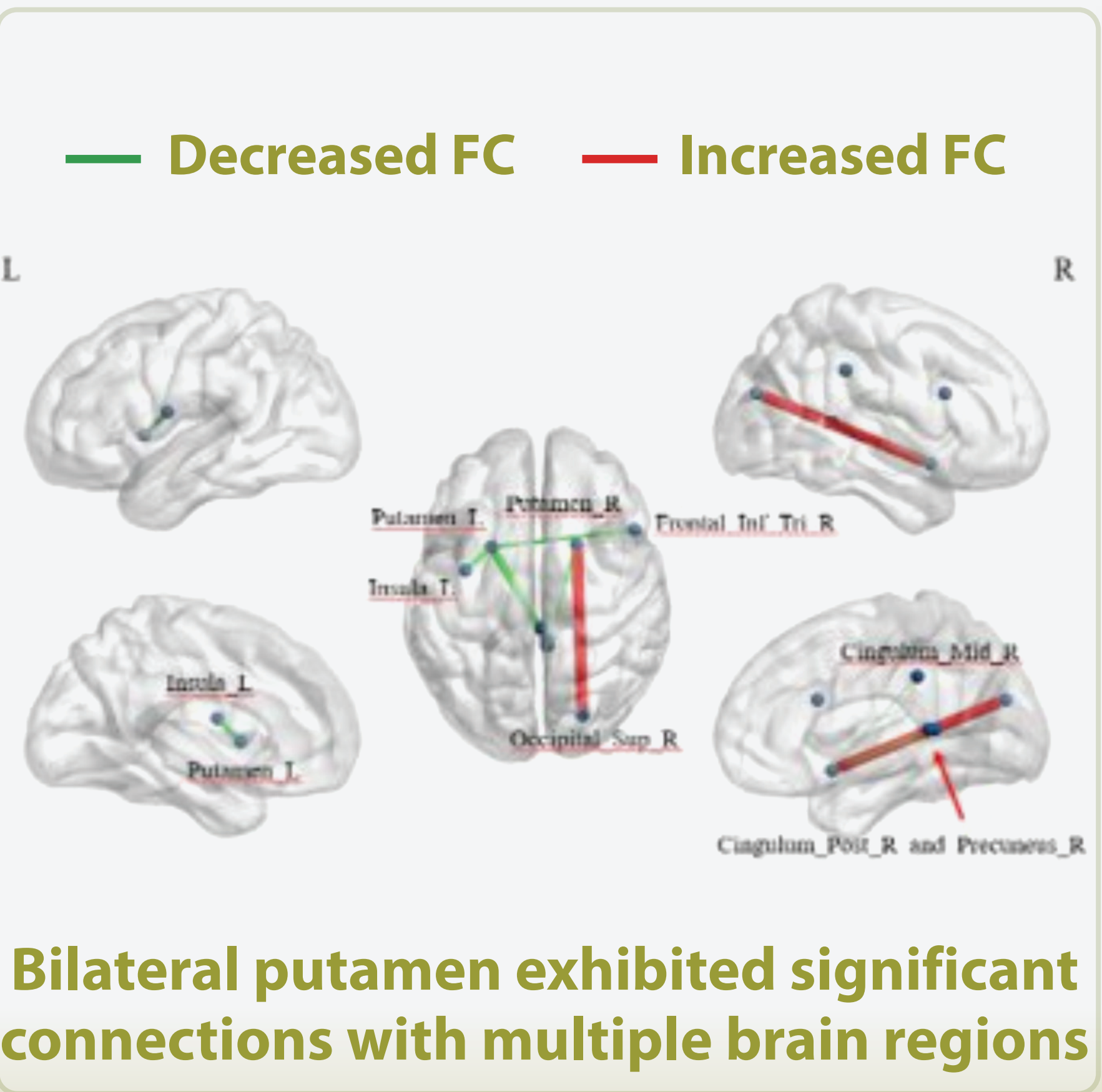
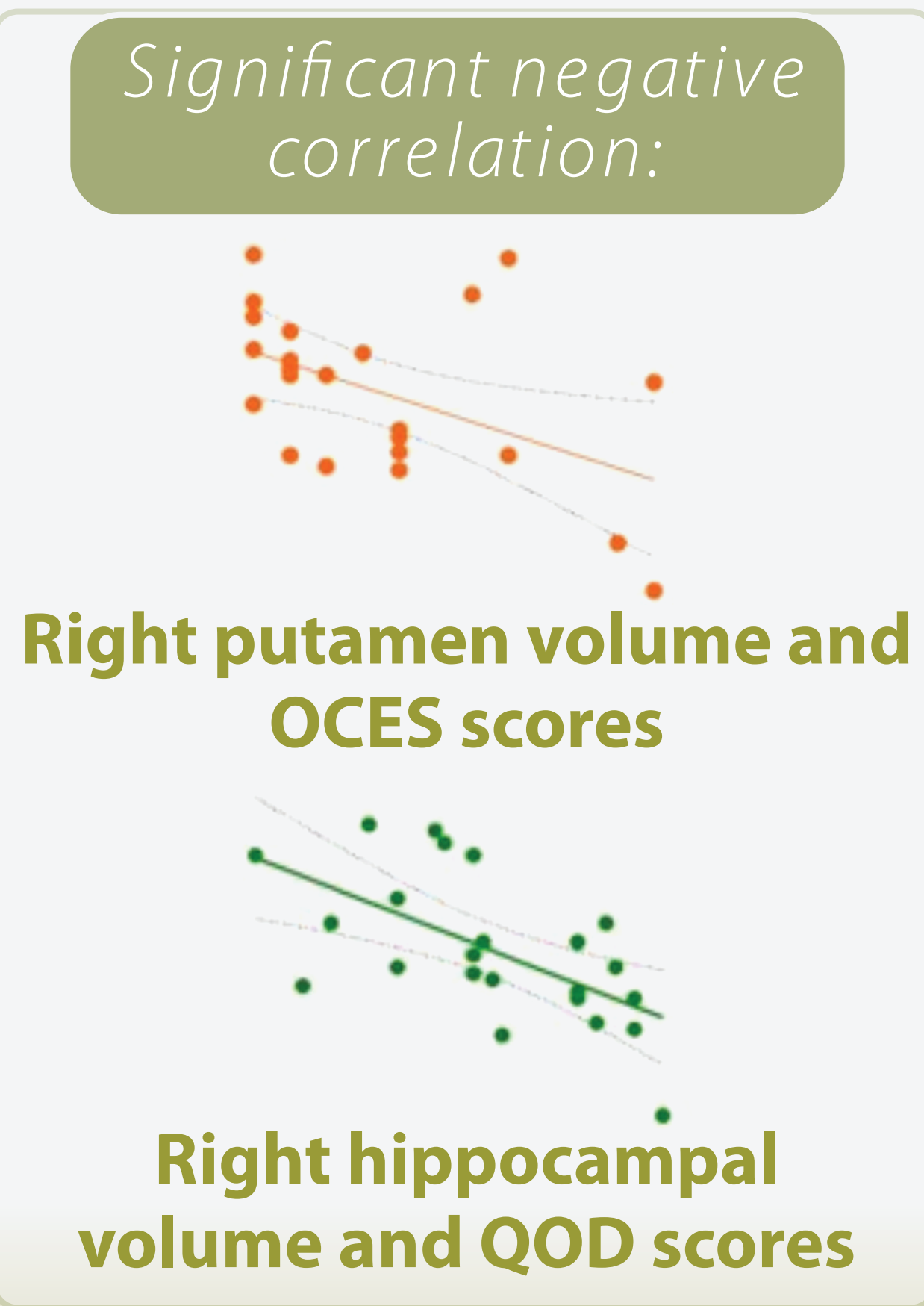
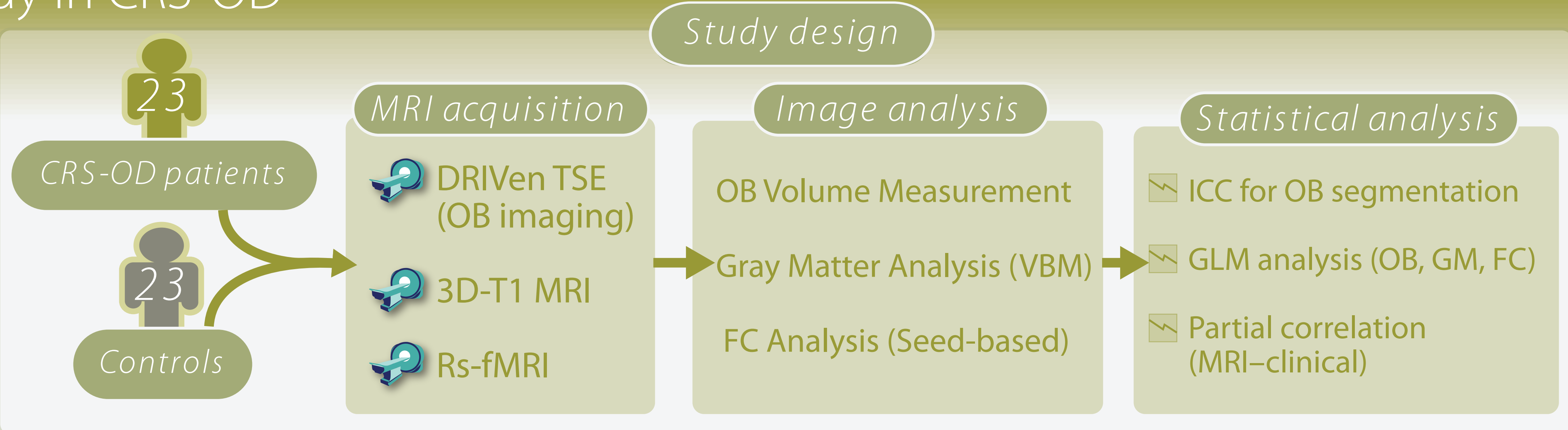


Decoding the neural basis of olfactory dysfunction

A multimodal MRI study in CRS-OD



Brain regions with significantly reduced volume in CRS-OD patients vs. controls



→ CRS-OD is characterized by OB atrophy, gray matter loss, and altered FC, reflecting both peripheral and central neural alterations

→ Multimodal MRI may provide new insights into CRS-OD pathophysiology, warranting further longitudinal studies