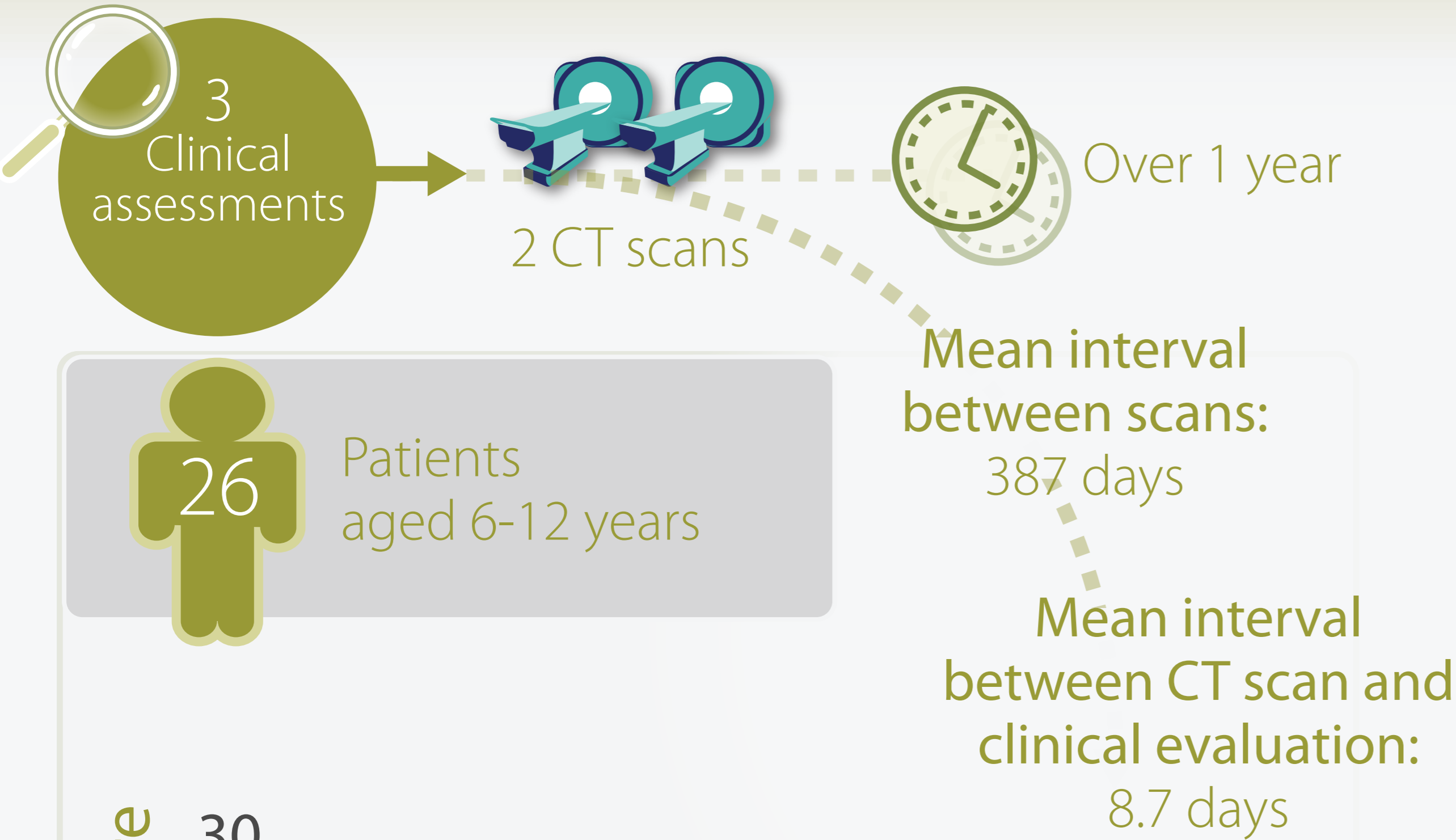
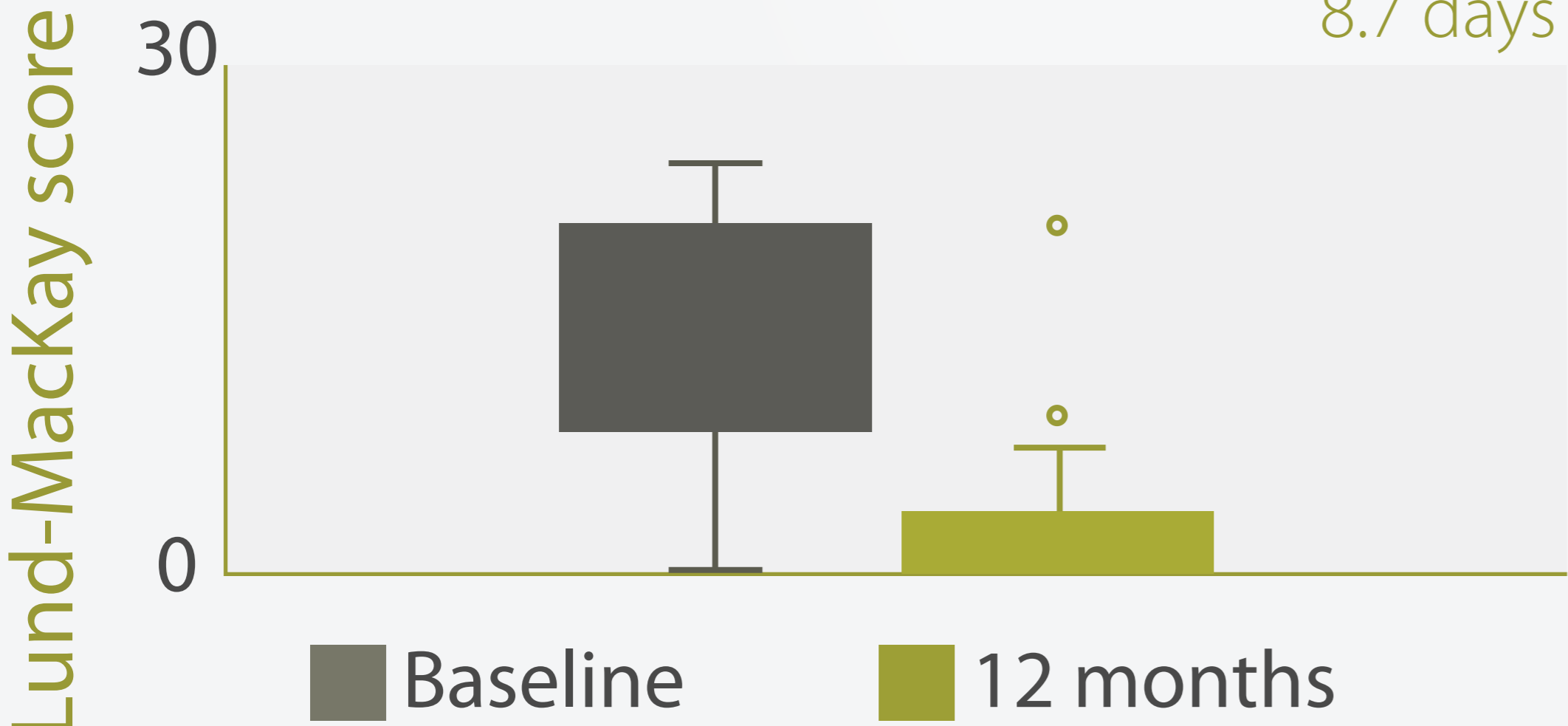


# Effects of Elexacaftor Tezacaftor Ivacaftor (ETI) on sinonasal imaging in children with cystic fibrosis (CF)

Prospective monocentric study



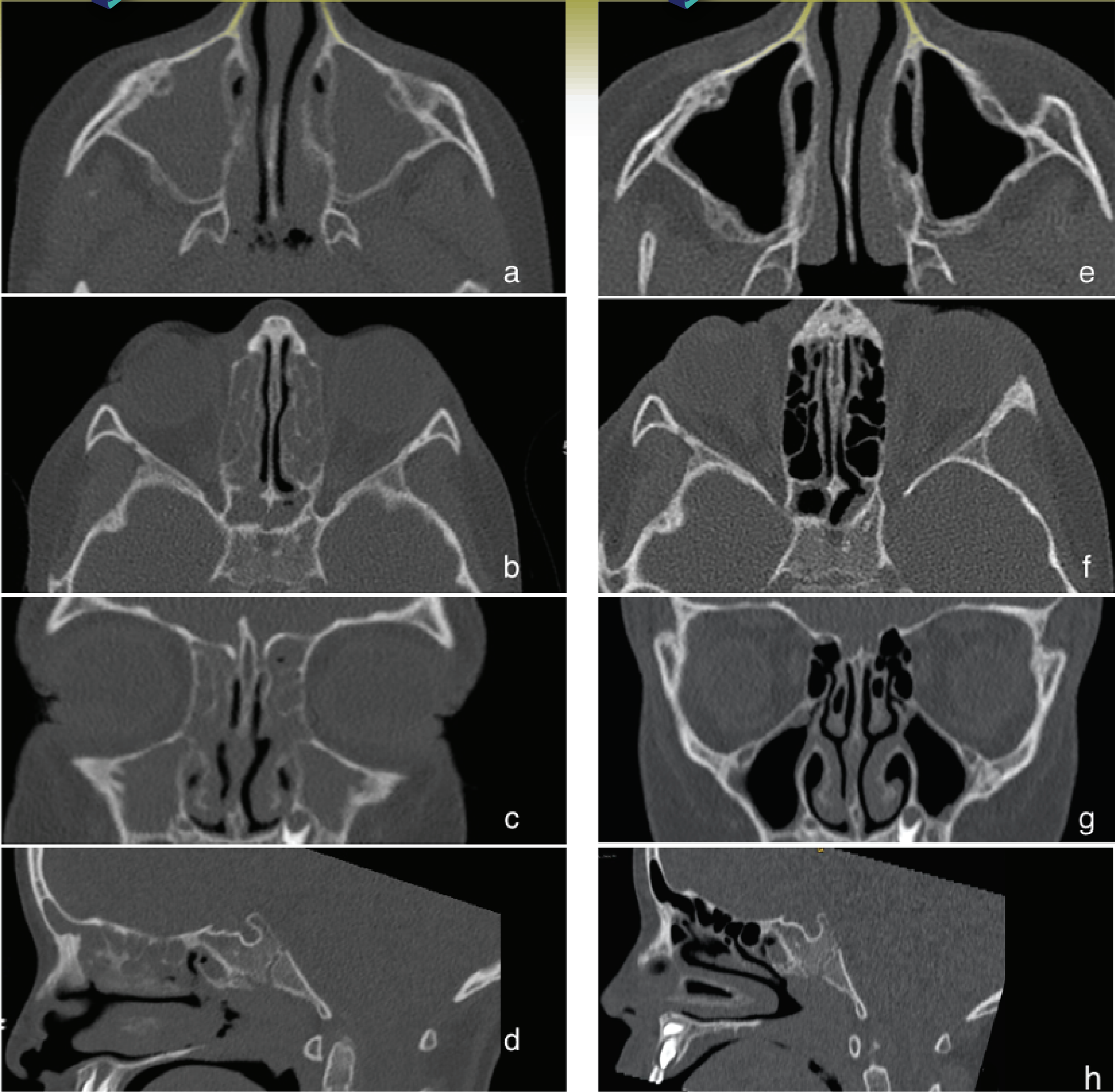
26 Patients aged 6-12 years



Significant correlation with QoL score (SN-5)

Baseline

1 year ETI



ETI improves sinonasal involvement in children with CF → Further studies needed to assess long-term efficacy