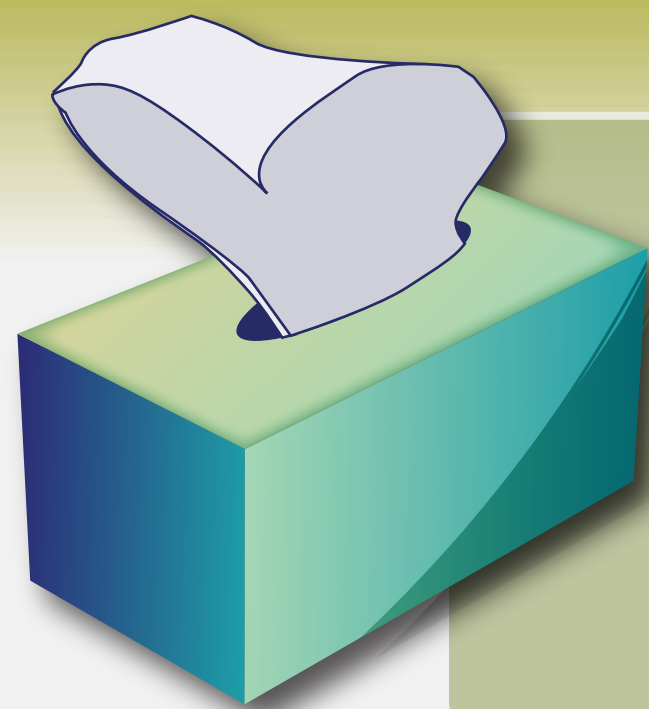
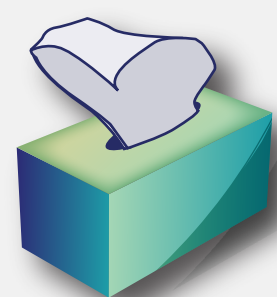


Establishing validity of a novel patient-centered and directly measurable definition of acute exacerbation of chronic rhinosinusitis (AECRS)



“A flare up of symptoms beyond day-to-day variation, lasting at least 3 days, and to which a distinct negative impact on a patient’s quality of life (QoL) or functionality can be attributed”

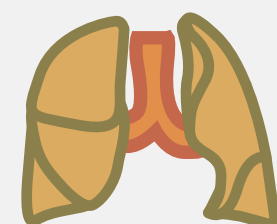
Cross-sectional study evaluating the previous 6 months



Number of AECRS



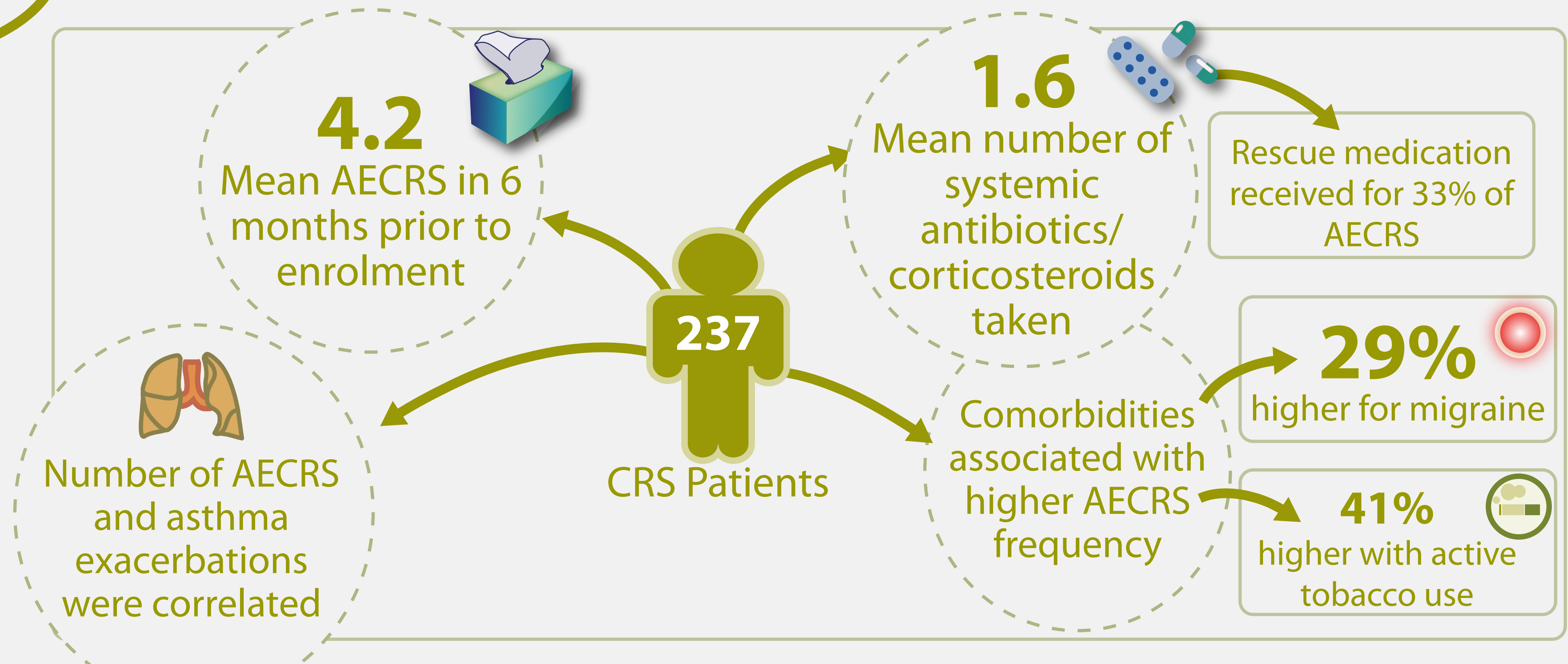
Courses of systemic antibiotics & corticosteroids



Number of asthma exacerbations in past 6 months



Disease-specific QoL



AECRS definition correlates with previously used indirect metrics of AECRS, but may be more sensitive to capturing all episodes of AECRS