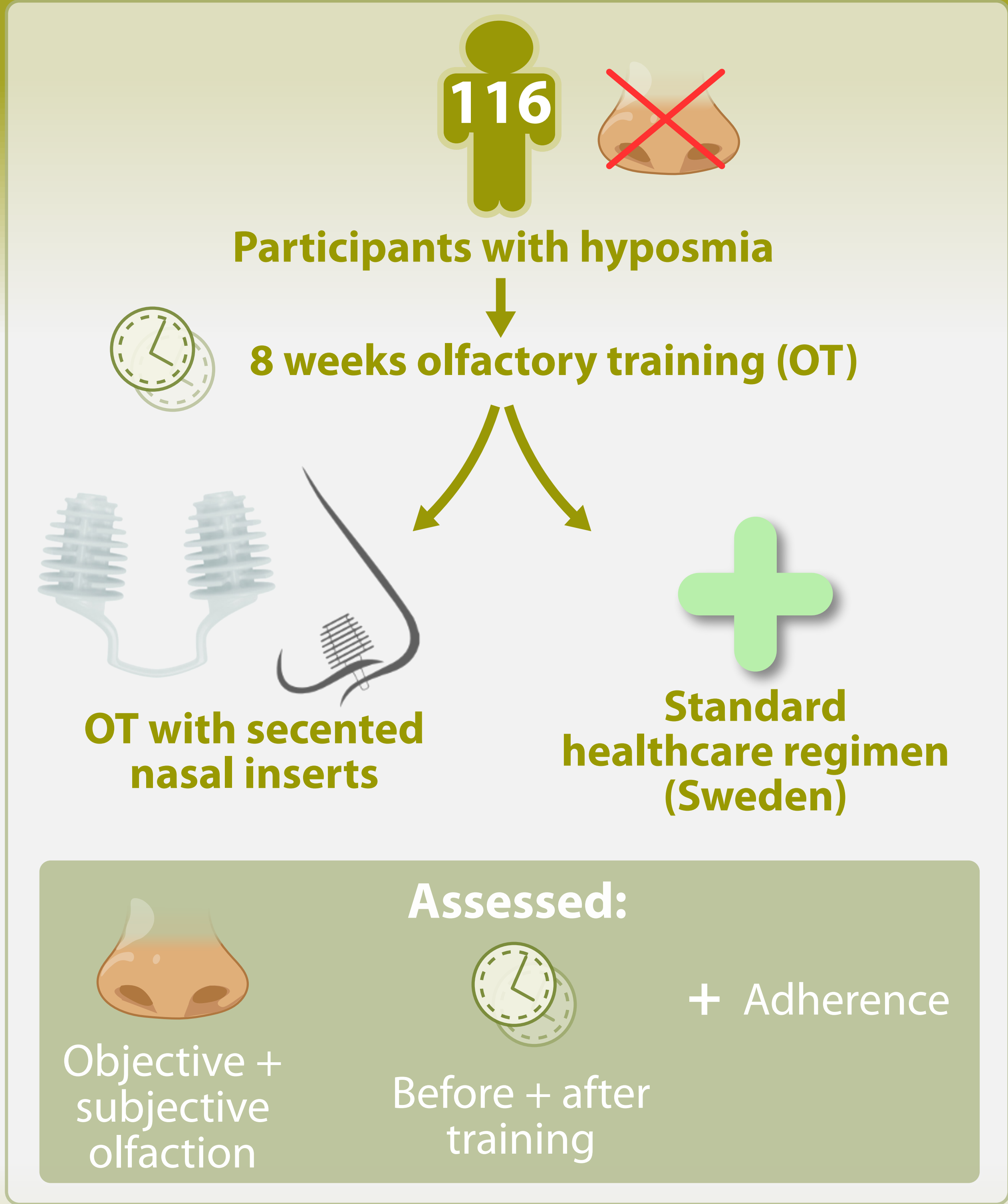
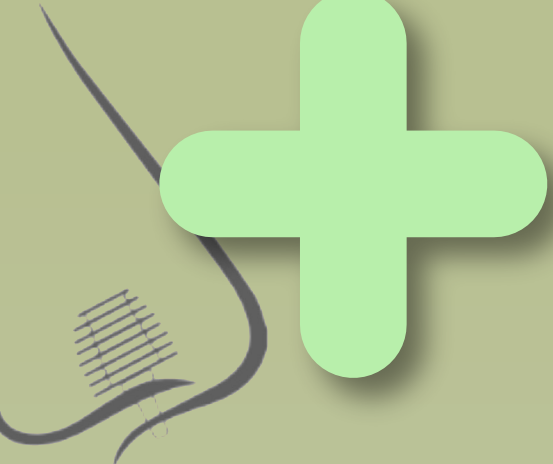









Olfactory training using nasal inserts is more effective due to increased adherence




**Significant subjective + objective improvement in both groups**

Nasal insert group

-  — **Similar result to standard care in overall treatment outcome**
-  **Increase in discrimination performance**
-  **Dropout rate**
-  **Adherence after excluding drop-out participants**
-  **Training consistency**  **Forgotten sessions**



Nasal inserts compared to standard care:

-  **Adherence to protocol**
-  **Tendency to finish treatment regimen**

while maintaining treatment effects