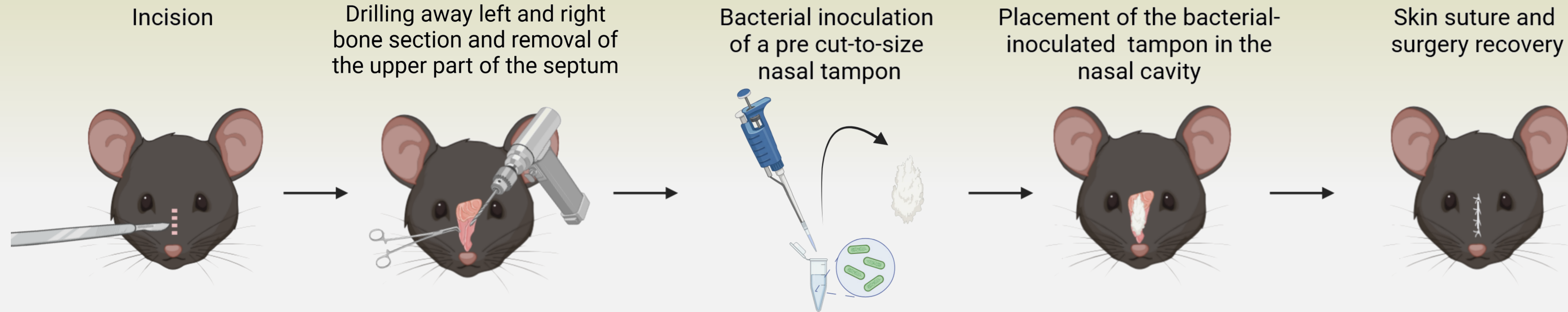


Mouse model of *Staphylococcus aureus*- and *Pseudomonas aeruginosa*-induced neutrophilic chronic rhinosinusitis

Surgical procedure



The bacterial-inoculated nasal tampon remains in situ until completion of the model



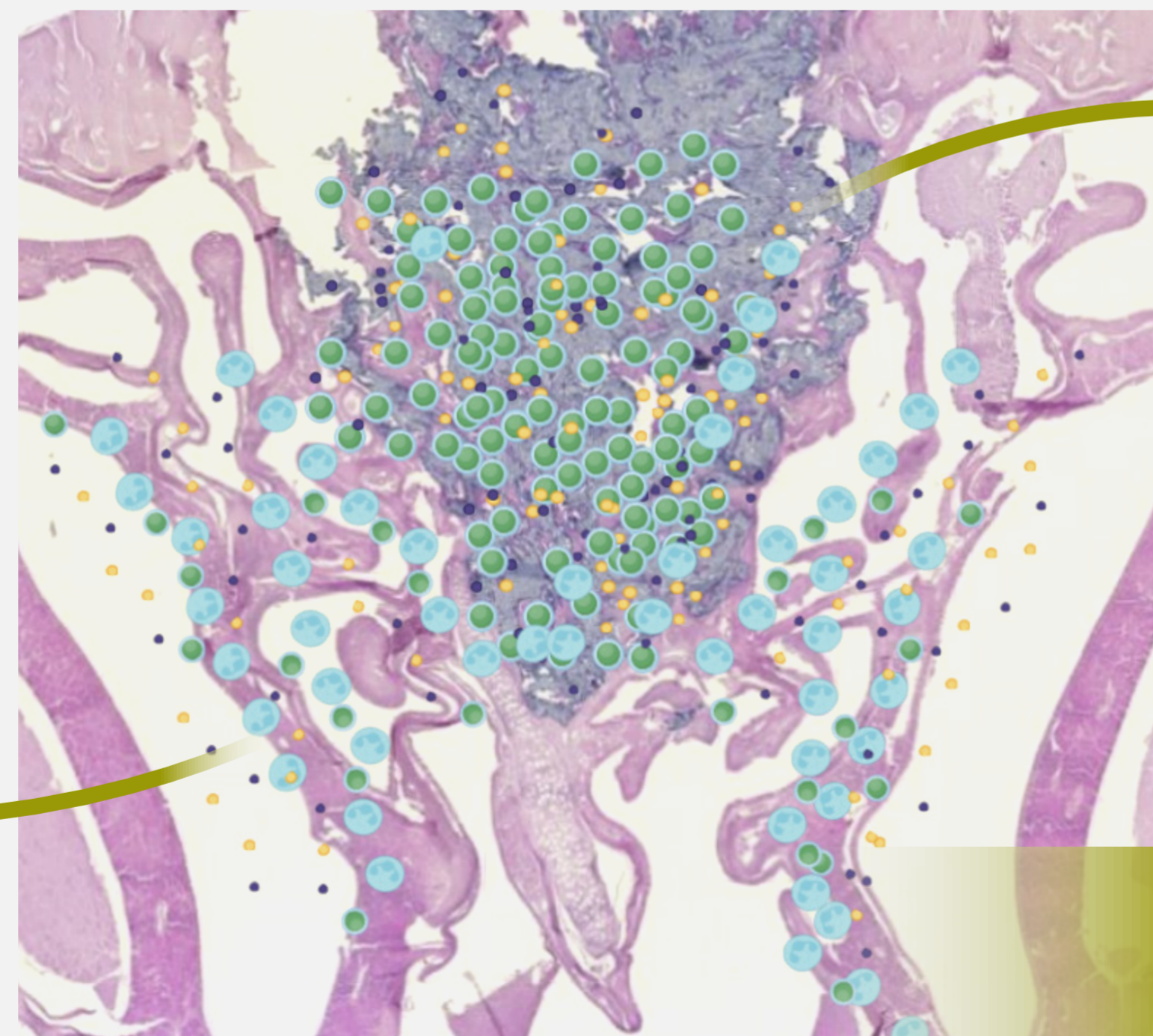
QR code shows detailed protocol + video of surgery

Mouse model of non-eosinophilic CRS

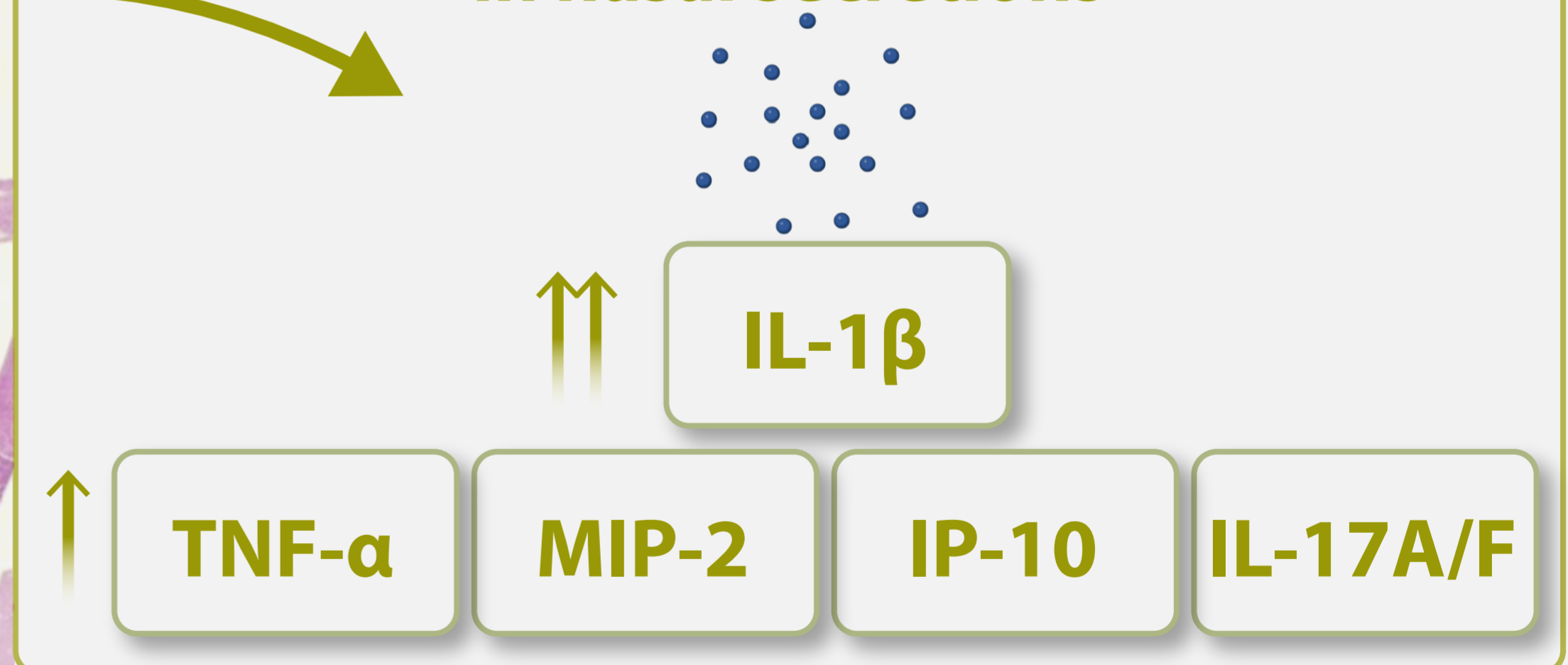
- Bacteria
- Non-Type 2 inflammatory mediators
- Neutrophil



Neutrophilic influx in maxillary sinus + nasal secretions



Non-Type 2 inflammatory mediators in nasal secretions



→ *S. aureus* and *P. aeruginosa* are potent inducers of neutrophilic inflammation in mice.

→ This model enables further study of non-eosinophilic CRS pathophysiology in vivo.

Staphylococcus aureus > *Pseudomonas aeruginosa* > *Streptococcus pneumoniae*