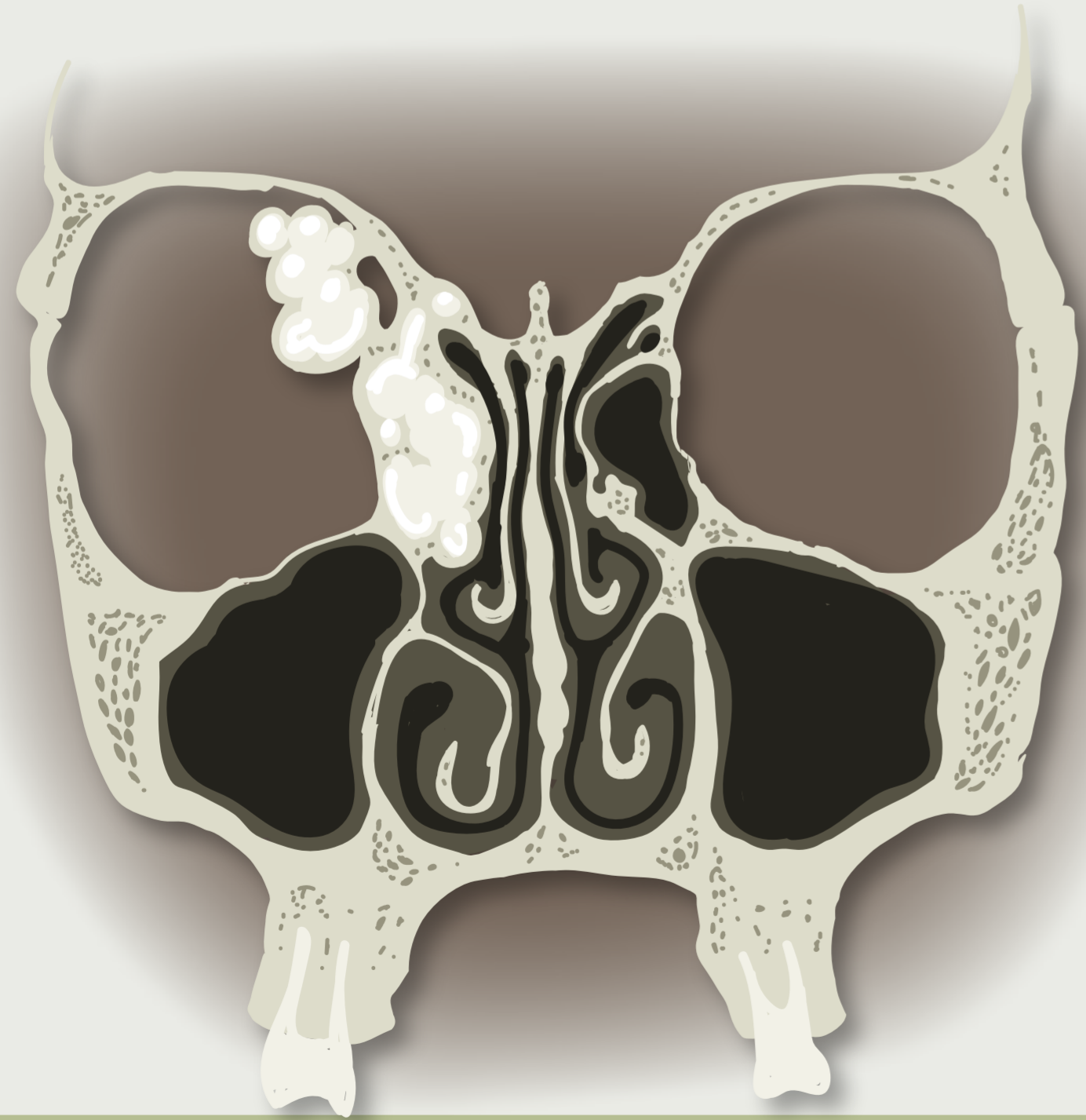


# Advanced paranasal sinuses osteomas: a retrospective multicentric analysis on surgical management outcomes and intra-and post-surgical complications

**n=160** Surgically treated for large paranasal sinus osteoma (PSO)

June 2007-September 2023

>3cm and/or located in critical areas



**Diagnosis**

- mostly due to clinical symptoms
- Predominantly in the frontal sinus

**Residual disease** 9.4%

**Influenced by:**

- PSO size
- specific anatomical relations

21.9% **≥1 Intra and/or postoperative complication**

**Large PSO size & anatomical relations can critically influence:**

- surgical decisions
- residual disease
- complication rate