

# Cigarette smoking and nasopharyngeal cancer risk



Systematic review & meta-analysis updated to May 2023

**Umbrella review**

**Traditional review**

Pooled relative risks (RR) according to:



Smoking status



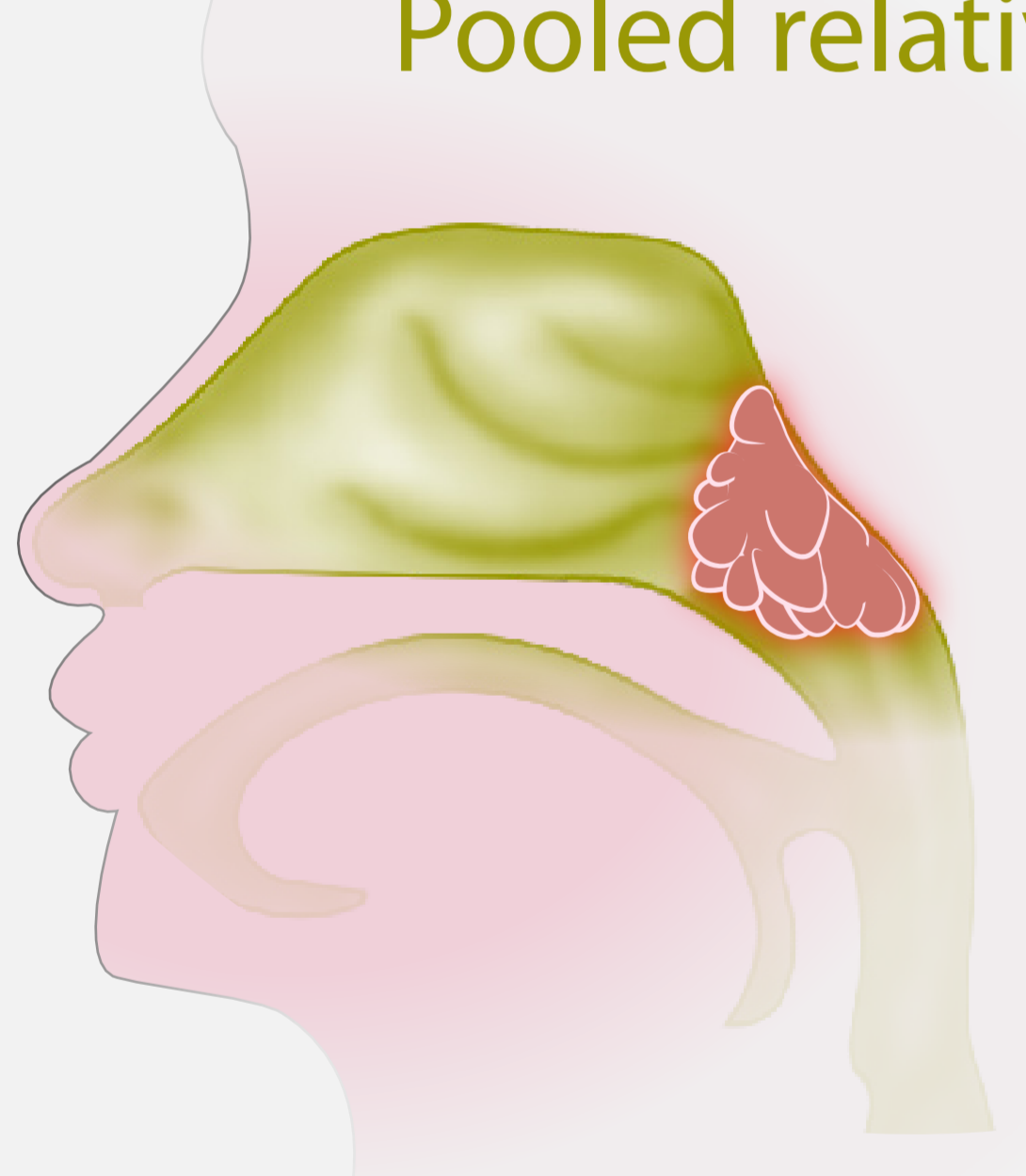
Intensity



Duration



Time since quitting



Nasopharyngeal cancer (NPC)



40 original studies included

RR vs never smokers

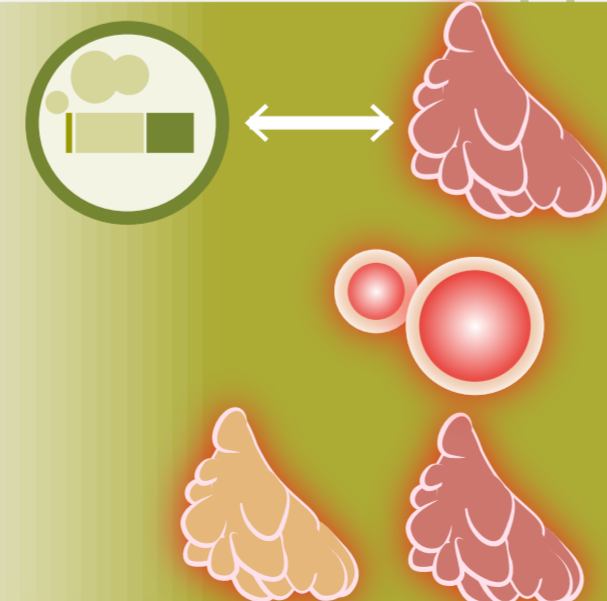
Current smokers	1.61
Former smokers	1.28
Ever smokers	1.62

RR ever vs never smokers

Squamous cell NPC	2.37
Undifferentiated NPC	1.06

**Significant, linear risk increase**

**Linear risk decrease**



- Confirmed direct association between smoking & NPC
- Significant increased risk even in moderate consumption
- Differential risk in squamous cell vs undifferentiated NPC