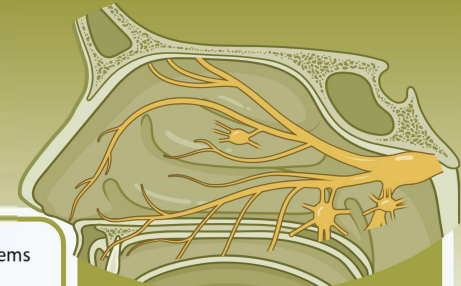


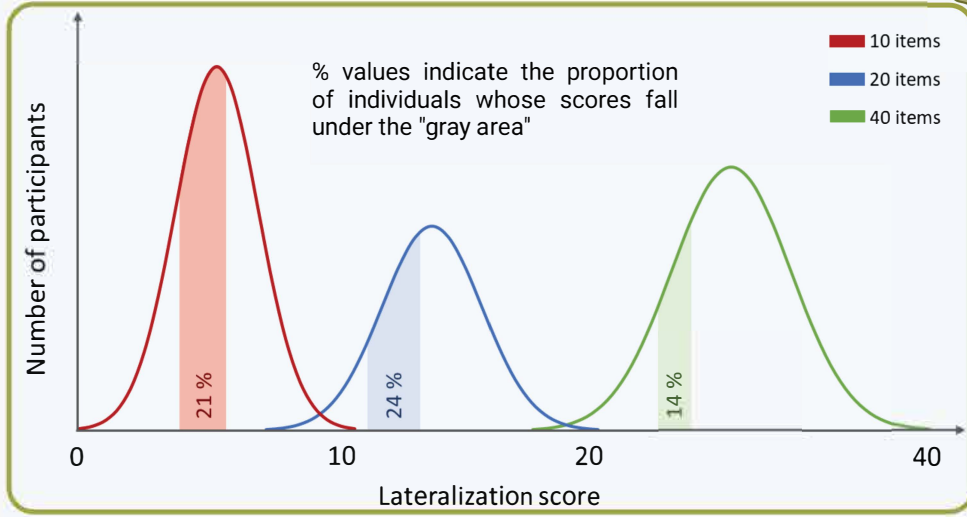
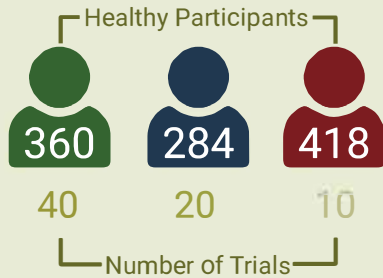
# Normative data for the lateralization task in the assessment of intranasal trigeminal function



Trigeminal Lateralization Task



Eucalyptol



Scores  $\geq 33$  = normal function  
 Scores  $\leq 26$  = decreased function

The 40-trial version is more useful than the other versions due to narrow "grey area" between 10th percentile and binomial cutoff